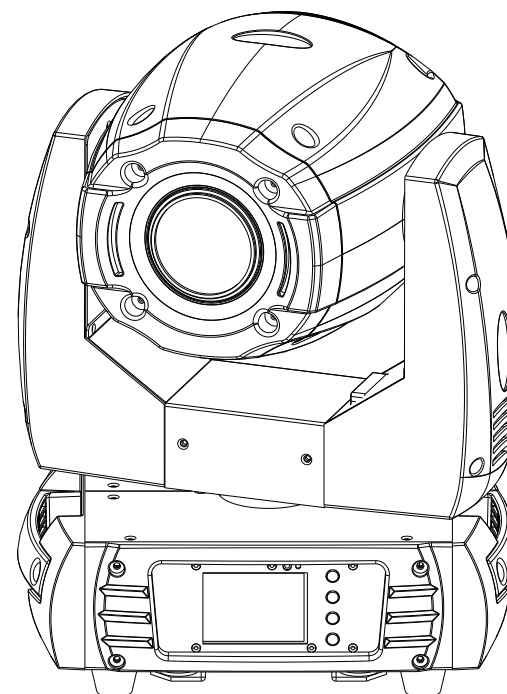


**ENCORE**  
PROFESSIONAL LIGHTING

# AuraSpot™ 150 LED



CE   IP20 LED  0.2m  t<sub>a</sub> 40°C t<sub>c</sub> 150°C

## User Manual

KEEP THIS MANUAL FOR FUTURE NEEDS

# **1 SAFETY INSTRUCTIONS**



## **CAUTION**

Becareful with your operations. With a dangerous voltage you cansuffer a dangerous electric shock when touching wires!

This device has left the factory in perfect condition. In order to maintain this condition and to ensure a safe operation, it is absolutely necessary for the user to follow the safety instructions and warning notes written in this user manual.



## **IMPORTANT**

Damages caused by the disregard of this user manual are not subject to warranty. The dealer will not accept liability for any resulting defects or problems.

If the device has been exposed to temperature changes due to environmental changes, do not switch it on immediately. The arising condensation could damage the device. Leave the device switched off until it has reached room temperature.

This device falls under protection-class I. Therefore it is essential that the device be earthed.

The electric connection must carry out by qualified person.

The device shall only be used with rate voltage and frequency.

Make sure that the available voltage is not higher than stated at the end of this manual.

Make sure the power cord is never crimped or damaged by sharp edges. If this would be the case, replacement of the cable must be done by an authorized dealer.

Always disconnect from the mains, when the device is not in use or before cleaning it. Only handle the power cord by the plug. Never pull out the plug by tugging the power cord.

During initial start-up some smoke or smell may arise. This is a normal process and does not necessarily mean that the device is defective, it should decrease gradually.

Please don't project the beam onto combustible substances.

Fixtures cannot be installed on combustible substances, keep more than 50cm distance with wall for smooth air flow, so there should be no shelter for fans and ventilation for heat radiation.

If the external flexible cable or cord of this luminaire is damaged, it shall be exclusively replaced by the manufacturer or his service agent or a similar qualified person in order to avoid a hazard.

## 10 MAINTENANCE AND CLEANING

The following points have to be considered during the inspection:

- 1) All screws for installing the devices or parts of the device have to be tightly connected and must not be corroded.
- 2) There must not be any deformations on the housing, color lenses, fixations and installation spots (ceiling, suspension, trussing).
- 3) Mechanically moved parts must not show any traces of wearing and must not rotate with unbalances.
- 4) The electric power supply cables must not show any damage, material fatigue or sediments.

Further instructions depending on the installation spot and usage have to be adhered by a skilled installer and any safety problems have to be removed.



### CAUTION

Disconnect from mains before starting maintenance operation.



In order to make the lights in good condition and extend the life time, we suggest a regular cleaning to the lights.

- 1) Clean the inside and outside lens each week to avoid the weakness of the lights due to accumulation of dust.
- 2) Clean the fan each week.
- 3) A detailed electric check by approved electrical engineer each three month, make sure that the circuit contacts are in good condition, prevent the poor contact of circuit from overheating.

We recommend a frequent cleaning of the device. Please use a moist, lint- free cloth. Never use alcohol or solvents.

There are no serviceable parts inside the device. Please refer to the instructions under "Installation instructions".

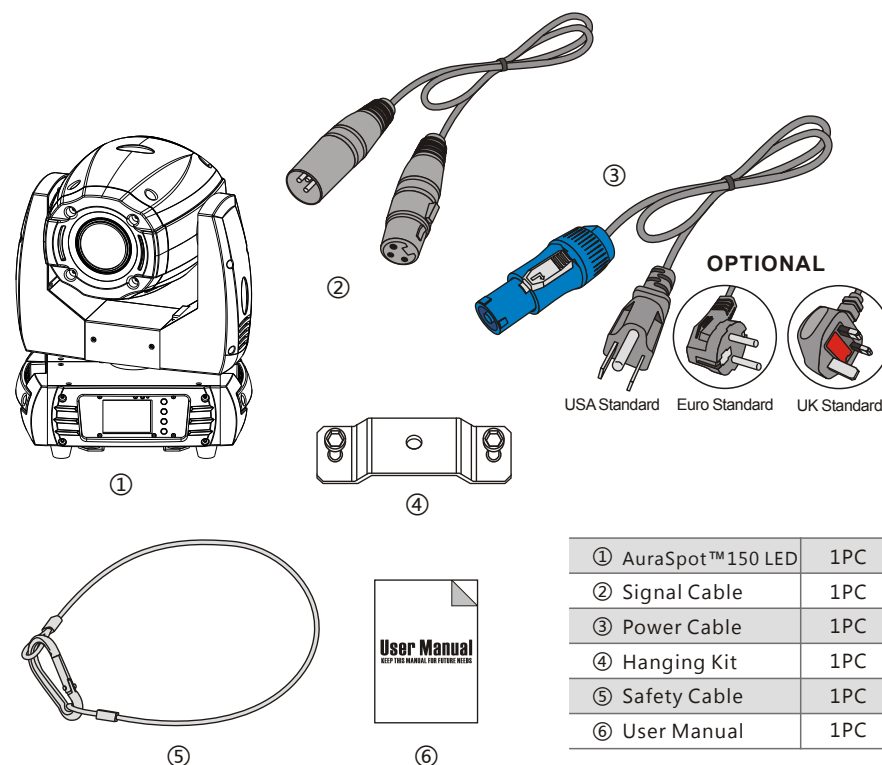
Should you need any spare parts, please order genuine parts from your local dealer.

## 2 UNPACKING

Thank you for choosing our AuraSpot™ 150 LED. For your own safety, please read this manual before installing the device. This manual covers the important information on installation and applications. Please install and operate the fixture with following instructions. Meanwhile, please keep this manual well for future needs.

The AuraSpot™ 150 LED is made of a new type of high temperature strength of engineering plastics and cast aluminum casing with nice outlook. The fixture is designed and manufactured strictly following CE standards, complying with international standard DMX512 protocol. It's available independently controlled and linkable with each other for operation. And it is applicable for large-scale live performances, theater, studio, nightclubs and discos.

The AuraSpot™ 150 LED adopts a 150W white LED lamp which features high brightness and stability. Please carefully unpack it when you receive the fixture and check whether it is damaged during the transportation. And please check whether the following items are included inside the box:



① AuraSpot™ 150 LED	1PC
② Signal Cable	1PC
③ Power Cable	1PC
④ Hanging Kit	1PC
⑤ Safety Cable	1PC
⑥ User Manual	1PC

### 3 FEATURES & SPECIFICATIONS

#### Features

- A 150W white LED lamp, 7500K
- 50000 hours life span and low power consumption
- 8/16 bit smooth and precise resolution for PAN/TILT movement
- 360°/540°/630° PAN and 90°/180°/270° TILT movement
- PAN/TILT inversion available
- Scan position memory, auto reposition after unexpected movement
- Specific high precision glass optic system with 13.2° projection angle
- Improved optics and flat beam field
- 1 rotatable gobo wheel with 6 rotatable and interchangeable gobos plus open with speed adjustable, stream effect, dithering effect and rotatable clockwise or anticlockwise
- Gobo size 23.9mm (external)/15mm (inner)
- Static gobo wheel with 11 gobos plus open
- Color wheel with 7 colors plus open
- Variable direction rainbow effect with speed adjustable
- 2 meter to infinite electric focus
- 3-facet prism with variable speed and direction
- 0-100% smooth linear LED dimmer
- Preset variable/random strobe and dimming pulse effect
- 25T/sec high speed LED shutter/strobe effect with variable speed
- Art-Net, King-Net, DMX
- 14/16 DMX channels USITT DMX-512
- DMX512, master-slave, and sound activated controllable or auto operation (7 built-in programs)
- DMX recorder and edit function integrated
- Blue LCD display
- POWRECON connector IN/OUT
- 3-pin XLR connectors IN/OUT
- Low noise fan cooling system
- Constant temperature readout and management function
- 45°C max ambient temperature
- IP20 protection rating
- 55dB at 3'dB rating
- 1\*1/4 turn fastening Omega clamp
- 1\* Safety attachment point

			85-87	Scan motor reset
			88-90	Colors motor reset
			91-93	Gobo motor reset
			94-96	Shutter&Dimmer motor reset
			97-99	Other motor reset
			100-119	Internal program 1
			120-139	Internal program 2
			140-159	Internal program 3
			160-179	Internal program 4
			180-199	Internal program 5
			200-219	Internal program 6
			220-239	Internal program 7
			240-255	Internal Sound program 1

Vector Mode	Function	Values	Description
	15	Color Time	0-255 Max to min speed
	16	Gobo Time	0-255 Max to min speed

			50-59	Gobo 5
			60-69	Gobo 6
			70-79	Gobo 7
			80-89	Gobo 8
			90-99	Gobo 9
			100-109	Gobo 10
			110-119	Gobo 11
			120-129	Gobo 1 shake slow to fast
			130-139	Gobo 2 shake slow to fast
			140-149	Gobo 3 shake slow to fast
			150-159	Gobo 4 shake slow to fast
			160-169	Gobo 5 shake slow to fast
			170-179	Gobo 6 shake slow to fast
			180-189	Gobo 7 shake slow to fast
			190-199	Gobo 8 shake slow to fast
			200-209	Gobo 9 shake slow to fast
			210-219	Gobo 10 shake slow to fast
			220-229	Gobo 11 shake slow to fast
			230-255	Rot. gobo wheel cont. rotation slow to fast
9	9	Shutter	0-31	Shutter closed
			32-63	Shutter open
			64-95	Strobe effect slow to fast
			96-127	Shutter open
			128-159	Pulse-effect in sequences slow to fast
			160-191	Shutter open
			192-223	Random strobe effect slow to fast
			224-255	Shutter open
10	10	Dimmer	0-255	Dimmer 0%... 100%
11	11	Focus	0-255	In(near) to out(far)
12	12	Rotating Prism	0-5	OFF
			6-127	ON
			128-189	Forwards rotation from fast to slow
			190-193	Prism rotation stop
			194-255	Forwards rotation from fast to slow
13	13	Speed pan/tilt	0-225	Max to min speed
			226-235	Blackout by movement
			236-245	Blackout by all wheel changing
			246-255	No function
14	14	Special function	0-19	No function
			20-29	No function
			30-39	Gobo Change to any position
			40-79	No function
			80-84	All Motor reset

## Specifications

**Input Voltage:** AC90-260V 50/60Hz

**LED Quantities:** 1\*150W white LED

**Control Signal:** DMX512, master-slave and sound activated or auto operation

**Control protocols:** Art-Net, King-Net, DMX

**Control Channel:** 14/16 DMX channels USITT DMX-512

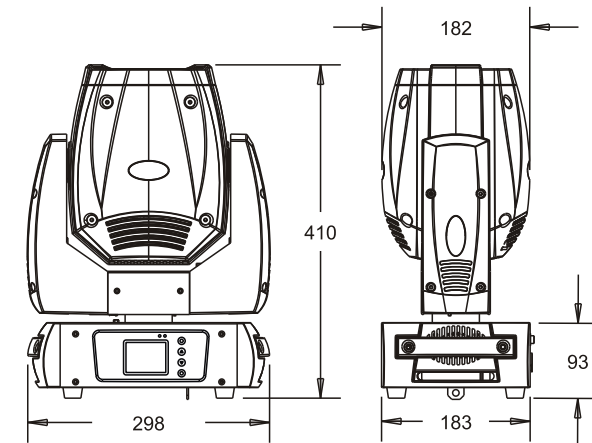
**Power Consumption:** 175W

**Dimensions:** 183(D)\*298(W)\*410(H)mm

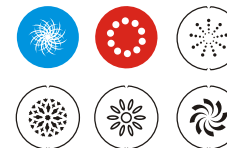
**Packing Dimensions:** 270(D)\*370(W)\*590(H)mm

**Net Weight:** 9.5kg

**Gross Weight:** 11kg



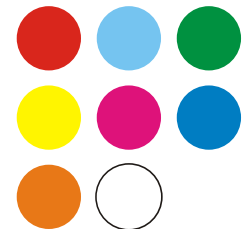
Rotating gobos



Static gobos

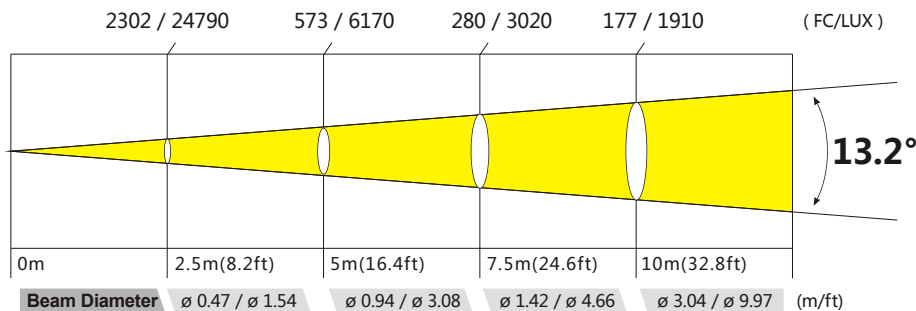


Colors



## 4 PHOTOMETRIC DATA

Photometric Beam Angle Data 13.2° Beam Angle LUX × 0.0929 = FC



## 5 OPERATION INSTRUCTIONS

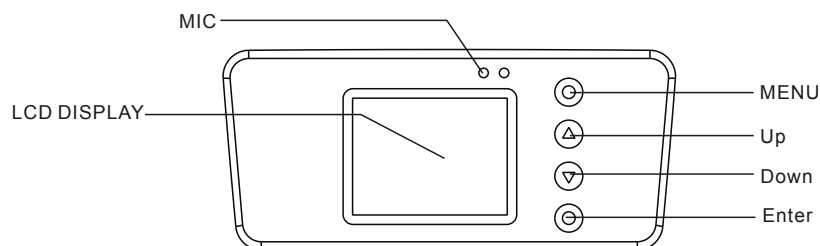
- The AuraSpot™ 150 LED is for beam effect for on-site decoration purpose.
- Don't turn on the fixture if it's been through severe temperature difference like after transportation because it might damage the light due to the environment changes. So make sure to operate the fixture until it is in normal temperature.
- This light should be keep away from strong shaking during any transportation or movement.
- Don't pull up the light by only the head, or it might cause damages to the mechanical parts.
- Don't expose the fixture in overheat, moisture or environment with too much dust when installing it. And don't lay any power cables on the floor. Or it might cause electronic shock to the people.
- Make sure the installation place is in good safety condition before installing the fixture.
- Make sure to put the safety chain and check whether the screws are screwed properly when installing the fixture.
- Make sure the lens are in good condition. It's recommended to replace the units if

## 9 DMX CHANNELS

Mode/Channel	Function	Values	Description
16B	DE		
1	1	Pan	0-255
2	2	Pan-fine	0-255
3	3	Tilt	0-255
4	4	Tilt-fine	0-255
5	5	Color wheel	0-15
			16-31
			32-47
			48-63
			64-79
			80-95
			96-111
			112-127
			128-189
			190-193
			194-255
6	6	Gobo wheel 1	0-9
			10-19
			20-29
			30-39
			40-49
			50-59
			60-69
			70-89
			90-109
			110-129
			130-149
			150-169
			170-189
			190-255
7	7	Gobo1 rotation	0-3
			4-127
			128-131
			132-255
8	8	Gobo wheel 2	0-9
			10-19
			20-29
			30-39
			40-49

## 8 MENU OPERATIONS

MENU	Function Mode	Dmx Address	A001~AXXX	DMX address setting
		Channel Mode	CH14 MODE	CH13 MODE
			CH16 MODE	CH15 MODE
		Auto Run	Internal Program1~8	Master/Alone
	Option	Music Control	Internal Program1~8	Master/Alone
		Reset Default	Yes/No	Reset Default
		Ethernet Set	ArtNet to DMX (On/Off)	Enabled ArtNet to DMX
			Device IP Addr:XXX.XXX.XXX.XXX	Device IP Address Setting
			Ctrl IP Addr:XXX.XXX.XXX.XXX	Ctrl IP Address Setting
			Universe:0-255	ArtNet Protocol prot Setting
		Reverse Pan/Tilt	Protocol Set:Kling-Net /ArtNet(Default)	Ethernet Protocol Selection
			Reverse PAN (On/Off)	Reverse Pan
			Reverse TILT (On/Off)	Reverse Tilt
			Select Pan 630°/540°/360°	Select Pan
		UI SET	Select Tilt 270°/180°/90°	Select Tilt
			MIC sensitivity 0~99%	Mic Sensitivity
			OFF Signal Mode (On/Off)	Signal Mode
	Information	Temperature	XXX°C/°F	Current Temperature
		Software Version	V1.0~9.9V	Software Version
	Manual Control	Reset	Total Reset	Total Reset
			Pan/Tilt Reset	Pan/Tilt Reset
			Color Reset	Color Reset
			Gobo Reset	Gobo Reset
			The Others Reset	The Others Reset
	ADVANCED (Access Code 088)	Channel	PAN=XXX.....	Channel Control
		Calibration	Pan=XXX.....	Calibration



there are any damages or severe scratch.

- Make sure the fixture is operated by qualified personnel who knows the fixture before using.
- Keep the original packages if any second shipment is needed.
- Don't try to change the fixtures without any instruction by the manufacturer or the appointed repairing agencies.
- It is not in warranty range if there are any malfunctions from not following the user manual to operate or any illegal operation, like shock short circuit, electronic shock, lamp broke, etc.

## 6 INSTALLATIONS

**Cautions:** For added protection mount the fixtures in areas outside walking paths, seating areas, or in areas where the fixture might be reached by unauthorized personnel.

Before mounting the fixture to any surface, make sure that the installation area can hold a minimum point load of 10 times the device's weight.

Fixture installation must always be secured with a secondary safety attachment, such as an appropriate safety cable.

Never stand directly below the device when mounting, removing, or servicing the fixture.

from a ceiling, or set on a flat level surface (see illustration below). Be sure this fixture is kept at least 0.5m (1.5 ft) away from any flammable materials (decoration etc.).

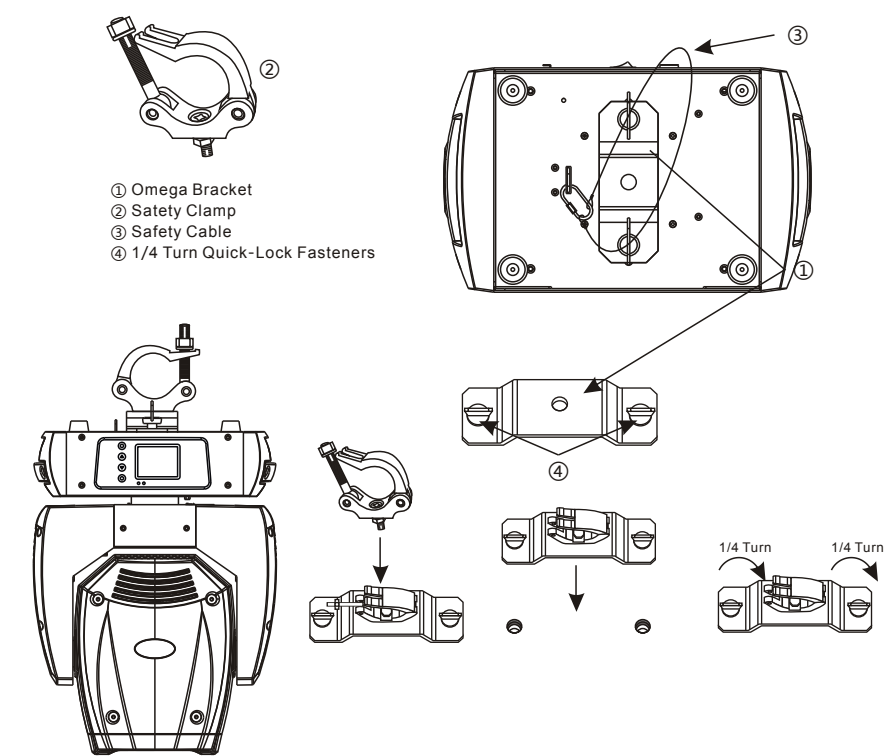
Always use and install the supplied safety cable as a safety measure to prevent accidental damage and/or injury in the event the clamp fails.

**Mounting points:** Overhead mounting requires extensive experience, including amongst others calculating working load limits, a fine knowledge of the installation material being used, and periodic safety inspection of all installation material and the fixture. If you lack these qualifications, do not attempt the installation yourself. Improper installation can result in bodily injury.

Be sure to complete all rigging and installation procedures before connecting the main power cord to the appropriate wall outlet.

**Clamp Mounting:** The AuraSpot™ 150 LED provides two unique mounting bracket assembly that integrates the bottom of the base, the included “Omega Bracket,” and the safety cable rigging point in one unit (see the illustration below). When mounting this fixture to truss be sure to secure an appropriately rated clamp to the included omega bracket using a M10 screw fitted through the center hole of the “omega bracket”. As an added safety measure be sure to attached at least one properly rated safety cable to the fixture using on of the safety cable rigging point integrated in the base assembly.

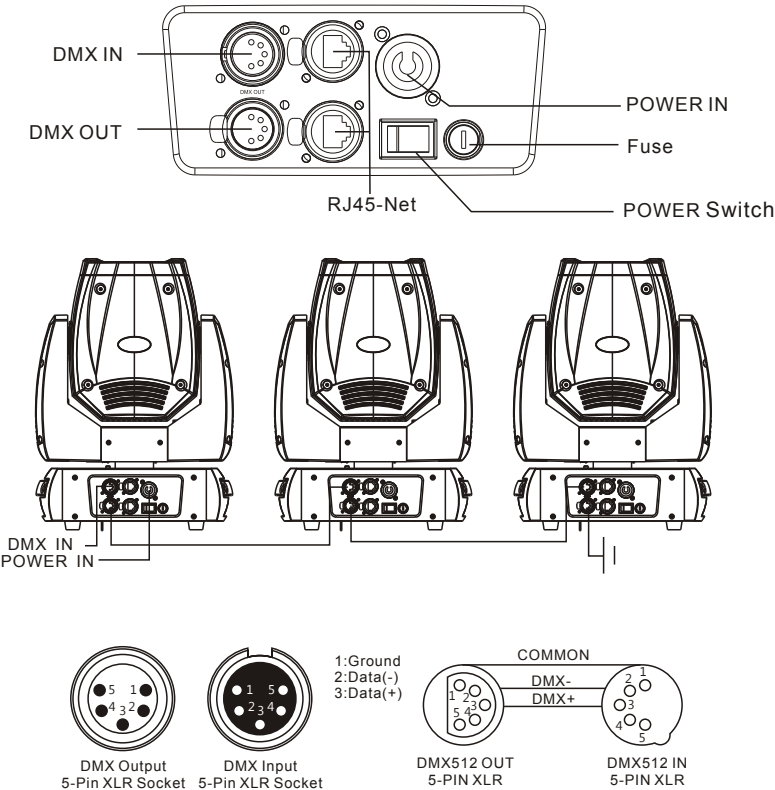
Regardless of the rigging option you choose for your AuraSpot™ 150LED, always be sure to secure your fixture with a safety cable. The fixture provides a built-in rigging point for a safety cable on the hanging bracket as illustrated above. Be sure to only use the designated rigging point for the safety cable and never secure a safety cable to a carrying handle.



# 7 DMX-512 CONTROL CONNECTIONS

Connect the provided XLR cable to the female 5-pin XLR output of your controller and the other side to the male 5-pin XLR input of the moving head. You can chain multiple Moving head together through serial linking. The cable needed should be two core, screened cable with XLR input and output connectors. Please refer to the diagram below.

DMX-512 connection with DMX terminator



For installations where the DMX cable has to run a long distance or is in an electrically noisy environment, such as in a discotheque, it is recommended to use a DMX terminator. This helps in preventing corruption of the digital control signal by electrical noise. The DMX terminator is simply an XLR plug with a 120  $\Omega$  resistor connected between pins 2 and 3, which is then plugged into the output XLR socket of the last fixture in the chain. Please see illustrations below.

